

Lightsource Test Report

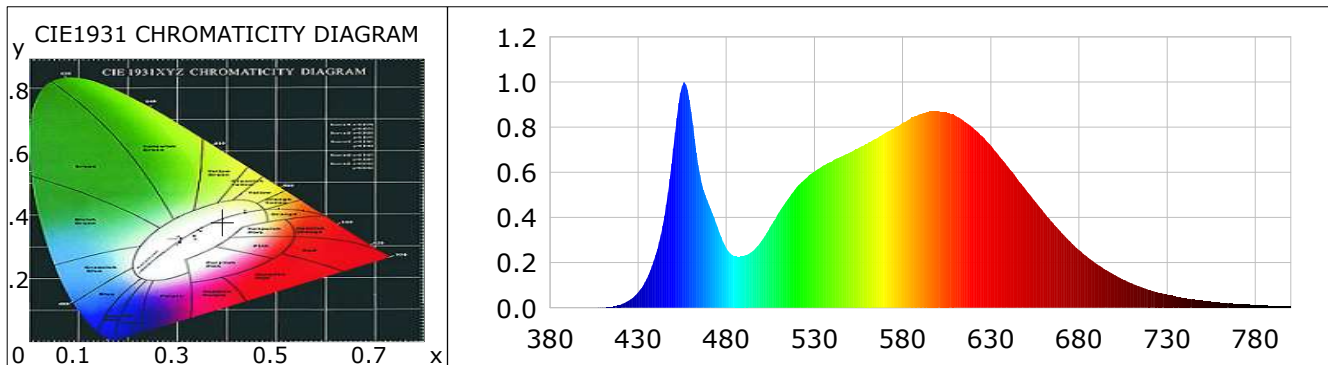
Product Information

Product Type: FL 30 75W 4000K OPAL

Manufacturer: FAROS LED

CIE Colorimetric Parameters

Chromaticity coordinates: $x=0.3912$ $y=0.3788$ $u(u')=0.2313$ $v=0.3360$ $v'=0.5041$
 CCT: $T_c=3735K$ ($duv=-0.00201$) Color Ratio: $R=0.197$ $G=0.769$ $B=0.034$
 Peak Wavelength: 456.1nm Half Bandwidth: 21.3nm
 Dominant Wavelength: 581.1nm Color Purity: 0.311
 CRI: $R_a=84.4$, $avgR(1\sim14)=78.3$, $avgR(1\sim15)=78.4$ TM30: $R_f=83$, $R_g=95$
 GAI: $GAI_BB_8=96.1$, $GAI_BB_15=104.4$, $GAI_EES=71.4$
 R1 =84 R2 =91 R3 =95 R4 =82 R5 =83 R6 =87 R7 =86 R8 =68
 R9 =23 R10=77 R11=79 R12=59 R13=86 R14=97 R15=80
 Color Quality Scale: $Q_a=82.6$, $Q_f=82.5$, $Q_p=83.2$, $Q_g=93.9$
 Q1 =84 Q2 =98 Q3 =78 Q4 =72 Q5 =78 Q6 =81 Q7 =85 Q8 =88
 Q9 =97 Q10=88 Q11=85 Q12=84 Q13=85 Q14=77 Q15=80



Photometric Parameters

Luminous Flux: Efficiency: 0.00 lm/W Radiant Power: 23.525 W
 EEI: 0.00 Energy Efficiency Class: A++ (EU 874-2012)

Electric Parameters

Voltage: 0.0000V Current: 0.0000A Power: 0.00W
 Power Factor: 0.0000 Frequency: 0.00Hz

Test Information

Scan Range: 380~800:1nm Photometric Method: sphere-spectroradiometer
 Stabilization Time: 0 ms ALC.: 1.0000 Photometric Condition: Sphere diameter: 1.00m, 4PI
 Max of Signal: 47177 (2996) CCD Integration Time: 95.24 ms

Lightsource Test Report

Product Information

Product Type: FL 30 75W 4000K OPAL

Manufacturer: FAROS LED

WL(nm)	PL	PE(mW/nm)	WL(nm)	PL	PE(mW/nm)	WL(nm)	PL	PE(mW/nm)
380	0.0009	0.1311	525	0.5726	87.8170	670	0.3336	51.1670
385	0.0003	0.0396	530	0.6039	92.6194	675	0.2937	45.0472
390	0.0007	0.1135	535	0.6302	96.6453	680	0.2557	39.2137
395	0.0004	0.0681	540	0.6492	99.5632	685	0.2238	34.3167
400	0.0006	0.0922	545	0.6699	102.7414	690	0.1949	29.8916
405	0.0010	0.1597	550	0.6888	105.6378	695	0.1702	26.1036
410	0.0027	0.4152	555	0.7087	108.6814	700	0.1465	22.4624
415	0.0052	0.7996	560	0.7272	111.5207	705	0.1259	19.3062
420	0.0141	2.1666	565	0.7499	114.9994	710	0.1086	16.6585
425	0.0334	5.1276	570	0.7740	118.7028	715	0.0935	14.3377
430	0.0686	10.5243	575	0.7953	121.9740	720	0.0796	12.2016
435	0.1313	20.1368	580	0.8199	125.7377	725	0.0676	10.3610
440	0.2367	36.3017	585	0.8427	129.2319	730	0.0586	8.9866
445	0.4089	62.7102	590	0.8585	131.6584	735	0.0509	7.8074
450	0.7077	108.5261	595	0.8697	133.3829	740	0.0426	6.5357
455	0.9833	150.7957	600	0.8725	133.8082	745	0.0366	5.6113
460	0.8708	133.5438	605	0.8657	132.7607	750	0.0320	4.9099
465	0.5897	90.4343	610	0.8508	130.4721	755	0.0273	4.1799
470	0.4608	70.6684	615	0.8266	126.7637	760	0.0231	3.5402
475	0.3575	54.8292	620	0.7967	122.1836	765	0.0197	3.0246
480	0.2646	40.5777	625	0.7610	116.7051	770	0.0174	2.6723
485	0.2289	35.0977	630	0.7187	110.2202	775	0.0144	2.2140
490	0.2308	35.3908	635	0.6696	102.6938	780	0.0122	1.8775
495	0.2523	38.6898	640	0.6223	95.4352	785	0.0101	1.5424
500	0.2967	45.4947	645	0.5705	87.4894	790	0.0095	1.4640
505	0.3591	55.0762	650	0.5214	79.9541	795	0.0081	1.2354
510	0.4243	65.0659	655	0.4713	72.2837	800	0.0069	1.0651
515	0.4818	73.8933	660	0.4229	64.8612			
520	0.5352	82.0849	665	0.3777	57.9233			

Condition: Tx:23.9°C, Ti:0.0°C, R.H.:60%
Test Lab: FAROS LED Lab
Operator: Lab

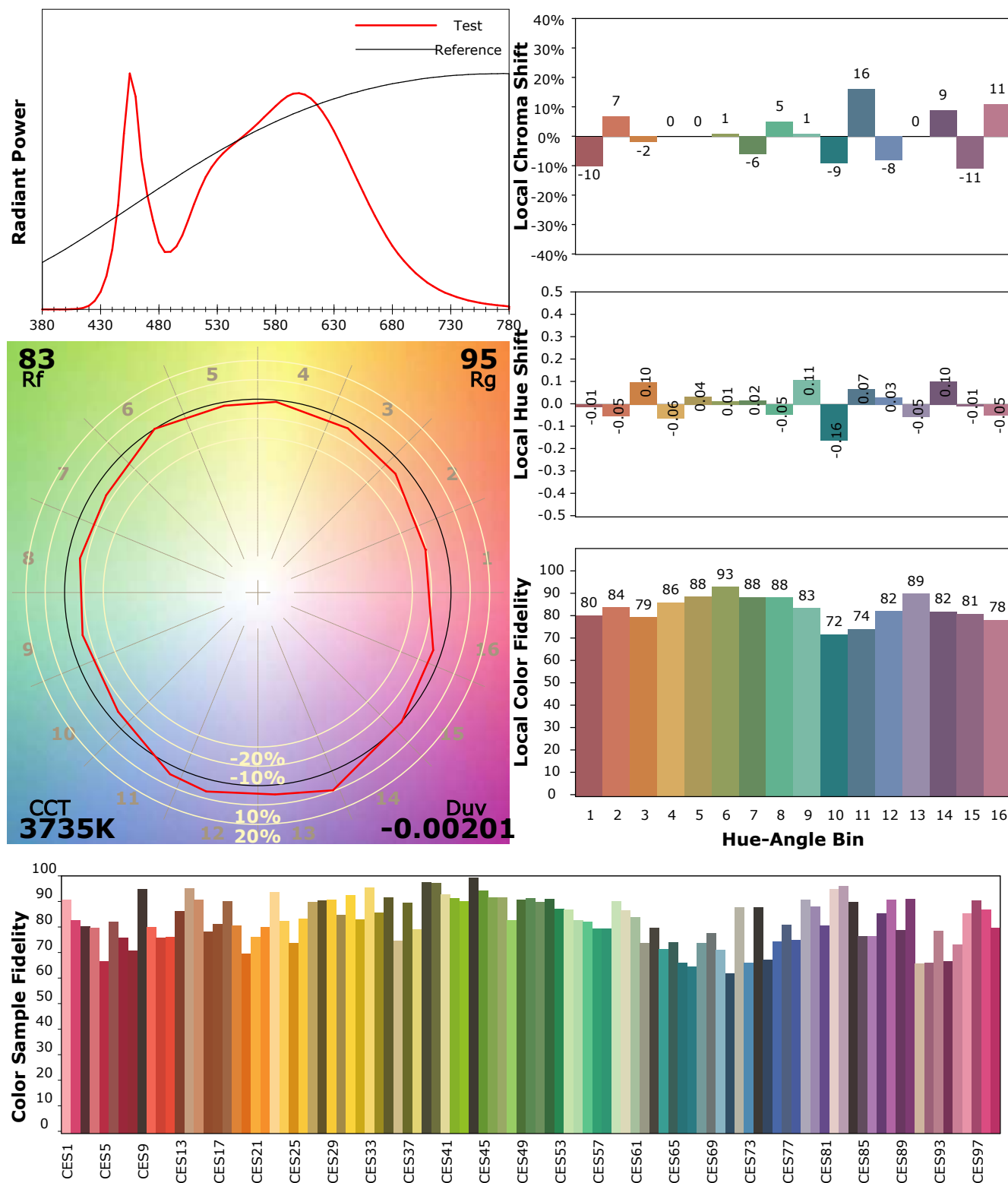
Test Device: Lisun LMS-9000A(Plus)
Test Time: 2021-11-23 10:11:42
Inspector:

IES TM-30-18 Color Rendition Report

Product Information

Product Type: FL 30 75W 4000K OPAL

Manufacturer: FAROS LED



Condition: Tx:23.9°C, Ti:0.0°C, R.H.:60%

Test Lab: FAROS LED Lab

Operator: Lab

Test Device: Lisun LMS-9000A(Plus)

Test Time: 2021-11-23 10:11:42

Inspector: