

Lightsource Test Report

Product Information

Product Type: FD 111 220W 5000K PI90

Manufacturer: FAROS LED

CIE Colorimetric Parameters

Chromaticity coordinates: $x=0.3534$ $y=0.3469$ $u(u')=0.2189$ $v=0.3224$ $v'=0.4836$

CCT: $T_c=4666K$ ($duv=-0.00567$)

Color Ratio: $R=0.160$ $G=0.806$ $B=0.034$

Peak Wavelength: 452.5nm

Half Bandwidth: 22.1nm

Dominant Wavelength: 582.9nm

Color Purity: 0.101

CRI: $R_a=76.0$, $avgR(1\sim14)=66.7$, $avgR(1\sim15)=67.1$

TM30: $R_f=74$, $R_g=94$

GAI: $GAI_BB_8=94.8$, $GAI_BB_15=102.3$, $GAI_EES=83.3$

$R_1=75$

$R_2=83$

$R_3=85$

$R_4=74$

$R_5=74$

$R_6=73$

$R_7=83$

$R_8=62$

$R_9=-8$

$R_{10}=55$

$R_{11}=69$

$R_{12}=43$

$R_{13}=77$

$R_{14}=91$

$R_{15}=73$

Color Quality Scale: $Q_a=72.1$, $Q_f=71.3$, $Q_p=74.9$, $Q_g=91.7$

$Q_1=82$

$Q_2=96$

$Q_3=62$

$Q_4=55$

$Q_5=66$

$Q_6=72$

$Q_7=77$

$Q_8=85$

$Q_9=91$

$Q_{10}=76$

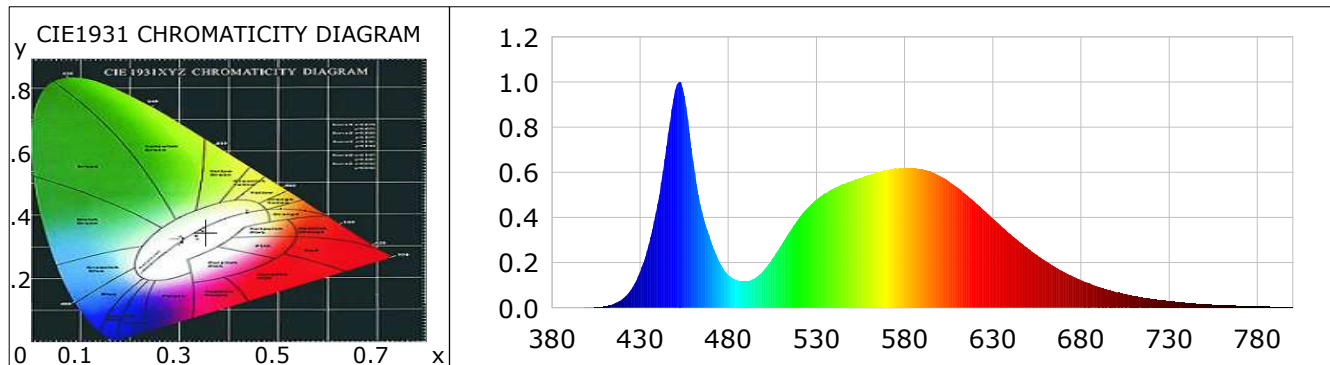
$Q_{11}=70$

$Q_{12}=70$

$Q_{13}=73$

$Q_{14}=66$

$Q_{15}=72$



Photometric Parameters

Luminous Flux:

EEI: 0.00

Efficiency: 0.00 lm/W

Radiant Power: 81.964 W

Energy Efficiency Class: A++ (EU 874-2012)

Electric Parameters

Voltage: 0.0000V

Power Factor: 0.0000

Current: 0.0000A

Frequency: 0.00Hz

Power: 0.00W

Test Information

Scan Range: 380~800:1nm

Stabilization Time: 0 ms ALC.: 1.0000

Max of Signal: 45186 (3208)

Photometric Method: sphere-spectroradiometer

Photometric Condition: Sphere diameter: 1.00m, 4PI

CCD Integration Time: 20.00 ms

Lightsource Test Report

Product Information

Product Type: FD 111 220W 5000K PI90

Manufacturer: FAROS LED

WL(nm)	PL	PE(mW/nm)	WL(nm)	PL	PE(mW/nm)	WL(nm)	PL	PE(mW/nm)
380	0.0013	0.9622	525	0.4425	326.1827	670	0.1607	118.4321
385	0.0011	0.8458	530	0.4796	353.5684	675	0.1407	103.7132
390	0.0010	0.7715	535	0.5089	375.1512	680	0.1231	90.7816
395	0.0007	0.5013	540	0.5302	390.8690	685	0.1079	79.5469
400	0.0016	1.1677	545	0.5498	405.2835	690	0.0929	68.4864
405	0.0033	2.3959	550	0.5627	414.8149	695	0.0811	59.7747
410	0.0078	5.7172	555	0.5771	425.4154	700	0.0704	51.9105
415	0.0180	13.2443	560	0.5885	433.8166	705	0.0605	44.6365
420	0.0395	29.1247	565	0.6009	443.0065	710	0.0528	38.9406
425	0.0814	59.9790	570	0.6100	449.6564	715	0.0459	33.8368
430	0.1601	118.0190	575	0.6195	456.7116	720	0.0396	29.1822
435	0.2844	209.6874	580	0.6205	457.4621	725	0.0344	25.3891
440	0.4629	341.2204	585	0.6209	457.7354	730	0.0293	21.6320
445	0.7189	529.9814	590	0.6157	453.8984	735	0.0257	18.9252
450	0.9671	712.9592	595	0.6037	445.0275	740	0.0220	16.2506
455	0.9418	694.3074	600	0.5840	430.5229	745	0.0193	14.2201
460	0.6526	481.0714	605	0.5605	413.1666	750	0.0164	12.1214
465	0.4275	315.1557	610	0.5328	392.7623	755	0.0140	10.3050
470	0.2999	221.1202	615	0.5012	369.4882	760	0.0128	9.4109
475	0.2038	150.2247	620	0.4669	344.2096	765	0.0109	8.0543
480	0.1461	107.6736	625	0.4313	317.9847	770	0.0094	6.9006
485	0.1226	90.3688	630	0.3964	292.2413	775	0.0084	6.1754
490	0.1173	86.4423	635	0.3600	265.3920	780	0.0072	5.3383
495	0.1311	96.6211	640	0.3272	241.1901	785	0.0063	4.6111
500	0.1657	122.1566	645	0.2936	216.4476	790	0.0057	4.1670
505	0.2183	160.9104	650	0.2628	193.7063	795	0.0043	3.2039
510	0.2773	204.4400	655	0.2345	172.8910	800	0.0043	3.1743
515	0.3388	249.7749	660	0.2080	153.3541			
520	0.3971	292.7569	665	0.1828	134.7383			

Condition: Tx:27.6'C, Ti:0.0'C, R.H.:60%
Test Lab: FAROS LED Lab
Operator: Lab

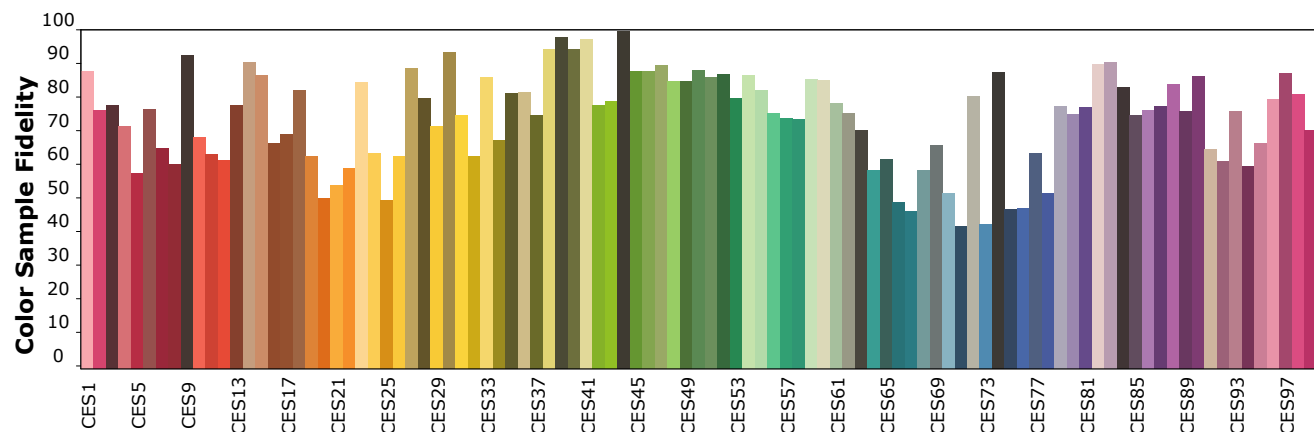
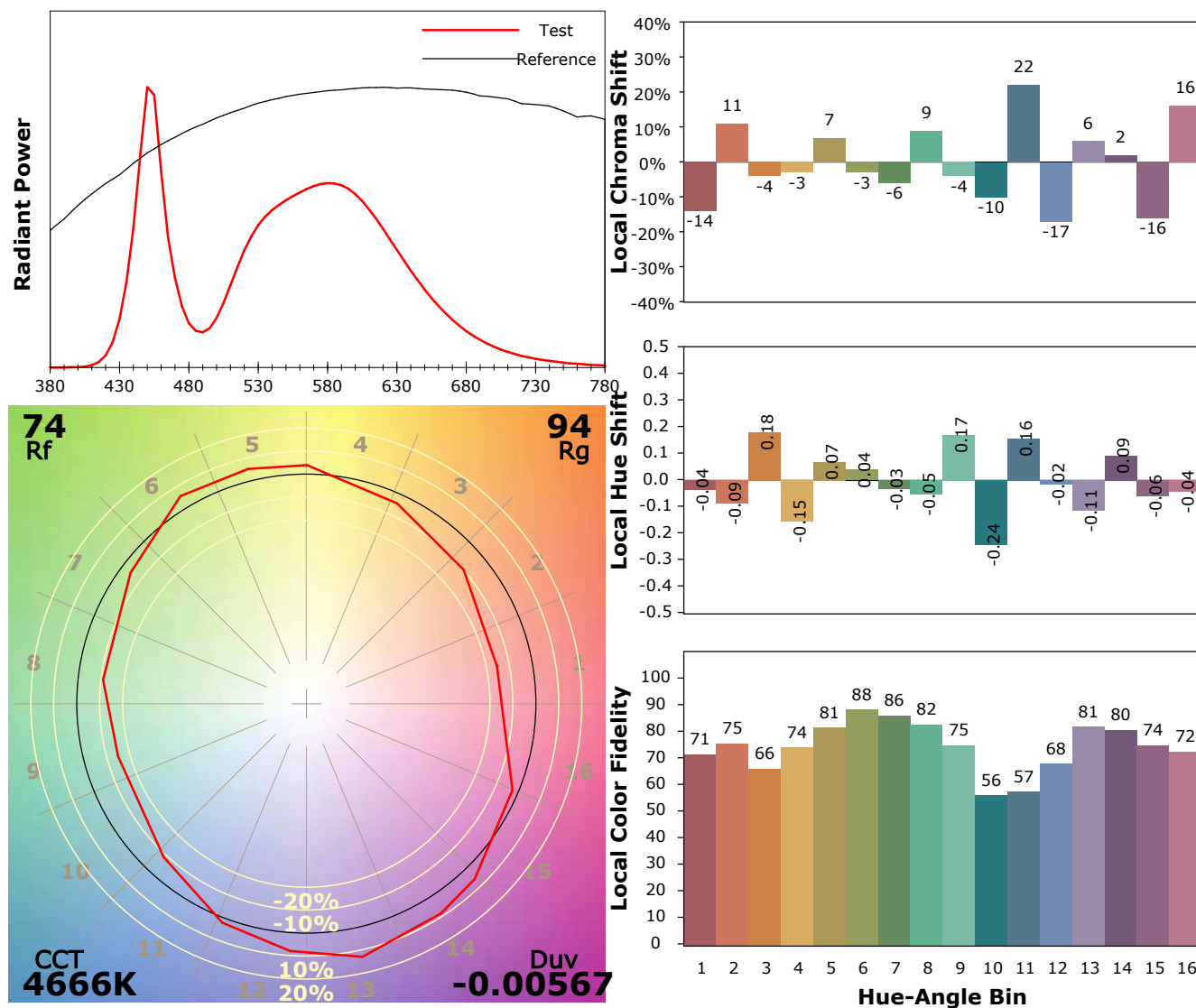
Test Device: Lisun LMS-9000A(Plus)
Test Time: 2021-07-26 13:54:07
Inspector:

IES TM-30-18 Color Rendition Report

Product Information

Product Type: FD 111 220W 5000K PI90

Manufacturer: FAROS LED



Condition: Tx:27.6°C, Ti:0.0°C, R.H.:60%

Test Lab: FAROS LED Lab

Operator: Lab

Test Device: Lisun LMS-9000A(Plus)

Test Time: 2021-07-26 13:54:07

Inspector: