

Report No.:

Test Time: 29.11.2021 09:36

## Luminaire Property

Luminaire Manufacturer: FAROS LED

Luminaire Category: FG 595 36W 5000K PRISM

Luminous Length (mm): 595

Luminous Width (mm): 595

Luminous Height (mm): 35

Voltage: 220.8 V

Current: 0.172 A

Power: 36.88 W

Power Factor: 0.967

## Photometric Results

CIE Class: Direct

Measurement Flux: 4577 lm

Downward Ratio: 99%

Total Rated Lamp Lumens: 4577.0 lm

Efficiency: 100%

Upward Ratio: 1%

Field Angle(C0/C180,C90/C270,C45/C225,C135/315): 162.7, 158.4, 152.6, 152.7

Beam Angle(C0/C180,C90/C270,C45/C225,C135/315): 84.1, 80.1, 78.9, 77.9

Luminaire Efficacy Rating (LER): 124.15

Central Intensity: 2234.49 cd

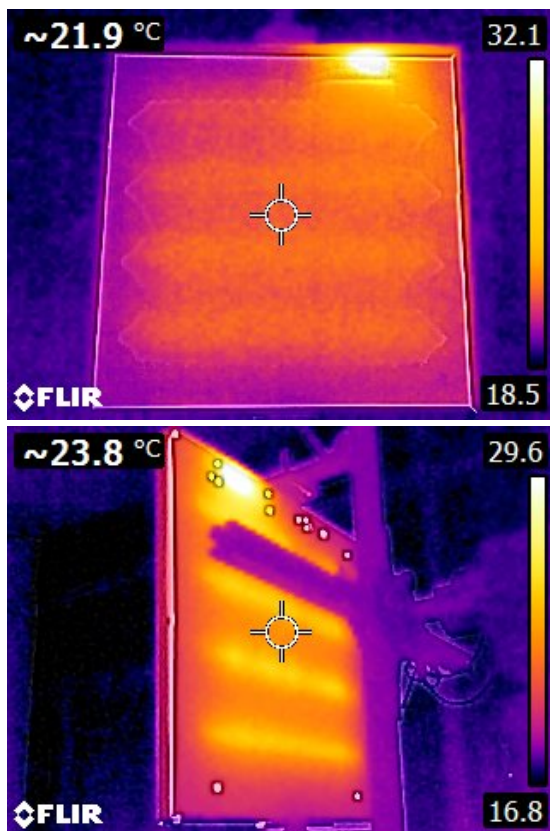
Max. Intensity: 2235.44 cd

Pos of Max. Intensity: H22.5 V0

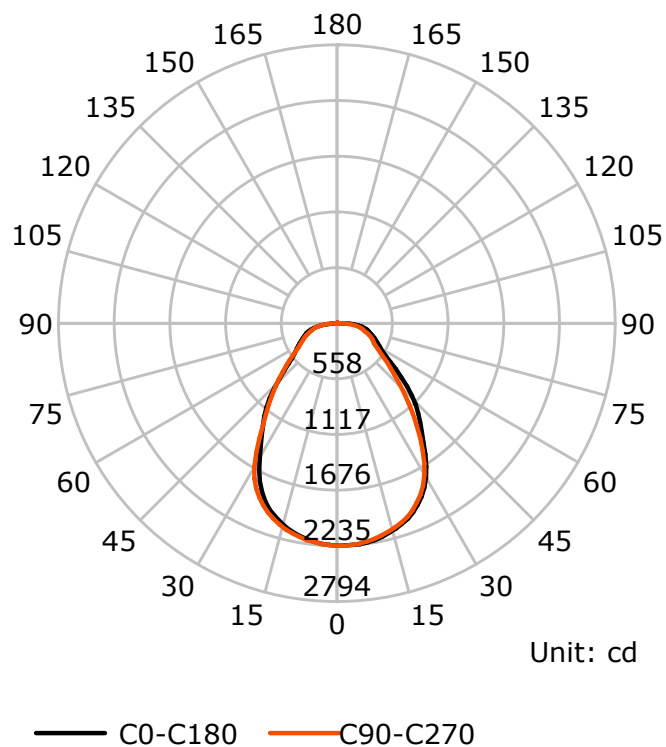
S/MH(C0/C180): 1.13

S/MH(C90/C270): 1.15

Termogramma



Luminous Intensity Distribution Curve



C Plane (°):0.0-360.0: 22.5

Test Lab: FAROS LED Lab

Test Type: TYPE C

Temperature:

Operator: Lab

Gamma Plane (°):0.0-180.0:2.0

Test Device: LSG-1800B

Distance: 12.735 m

Humidity:

Inspector:

## Lightsource Test Report

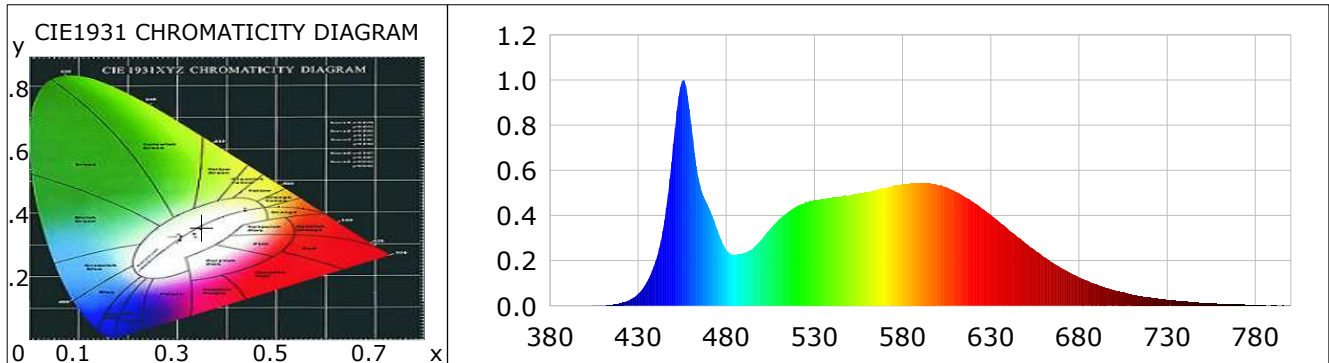
### Product Information

Product Type: FG 595 36W 5000K PRISM

Manufacturer: FAROS LED

### CIE Colorimetric Parameters

Chromaticity coordinates:  $x=0.3487$   $y=0.3560$   $u(u')=0.2122$   $v=0.3249$   $v'=0.4873$   
 CCT:  $T_c=4881K$  ( $duv=0.00075$ ) Color Ratio:  $R=0.165$   $G=0.787$   $B=0.048$   
 Peak Wavelength: 455.6nm Half Bandwidth: 19.3nm  
 Dominant Wavelength: 573.4nm Color Purity: 0.115  
 CRI:  $R_a=85.3$ ,  $avgR(1\sim14)=79.1$ ,  $avgR(1\sim15)=79.1$  TM30:  $R_f=83$ ,  $R_g=93$   
 GAI:  $GAI\_BB\_8=90.6$ ,  $GAI\_BB\_15=98.1$ ,  $GAI\_EES=81.6$   
 R1 =85 R2 =93 R3 =95 R4 =82 R5 =83 R6 =87 R7 =87 R8 =70  
 R9 =22 R10=80 R11=81 R12=55 R13=88 R14=98 R15=80  
 Color Quality Scale:  $Q_a=83.3$ ,  $Q_f=83.4$ ,  $Q_p=82.5$ ,  $Q_g=91.8$   
 Q1 =82 Q2 =97 Q3 =80 Q4 =73 Q5 =78 Q6 =81 Q7 =86 Q8 =90  
 Q9 =98 Q10=91 Q11=87 Q12=87 Q13=86 Q14=77 Q15=79



### Photometric Parameters

Luminous Flux:  
EEI: 0.00

Efficiency: 0.00 lm/W

Radiant Power: 13.998 W

Energy Efficiency Class: A++ (EU 874-2012)

### Electric Parameters

Voltage: 0.0000V  
Power Factor: 0.0000

Current: 0.0000A  
Frequency: 0.00Hz

Power: 0.00W

### Test Information

Scan Range: 380~800:1nm  
 Stabilization Time: 0 ms ALC.: 1.0000  
 Max of Signal: 45651 (2688)

Photometric Method: sphere-spectroradiometer  
 Photometric Condition: Sphere diameter: 1.00m, 4PI  
 CCD Integration Time: 106.72 ms

## Lightsource Test Report

### Product Information

Product Type: FG 595 36W 5000K PRISM

Manufacturer: FAROS LED

WL(nm)	PL	PE(mW/nm)	WL(nm)	PL	PE(mW/nm)	WL(nm)	PL	PE(mW/nm)
380	0.0005	0.0622	525	0.4570	59.4607	670	0.1683	21.9020
385	0.0013	0.1684	530	0.4677	60.8562	675	0.1467	19.0824
390	0.0006	0.0833	535	0.4760	61.9359	680	0.1273	16.5682
395	0.0006	0.0843	540	0.4800	62.4500	685	0.1107	14.4031
400	0.0005	0.0698	545	0.4841	62.9800	690	0.0957	12.4456
405	0.0017	0.2255	550	0.4895	63.6868	695	0.0815	10.5978
410	0.0027	0.3550	555	0.4972	64.6928	700	0.0708	9.2144
415	0.0054	0.6987	560	0.5050	65.7029	705	0.0602	7.8276
420	0.0122	1.5861	565	0.5145	66.9470	710	0.0507	6.5972
425	0.0253	3.2874	570	0.5223	67.9564	715	0.0428	5.5742
430	0.0527	6.8632	575	0.5321	69.2282	720	0.0361	4.6928
435	0.1066	13.8664	580	0.5388	70.0987	725	0.0313	4.0676
440	0.2003	26.0604	585	0.5452	70.9295	730	0.0269	3.4942
445	0.3802	49.4702	590	0.5454	70.9655	735	0.0228	2.9724
450	0.7190	93.5430	595	0.5432	70.6782	740	0.0191	2.4872
455	0.9963	129.6275	600	0.5348	69.5773	745	0.0158	2.0575
460	0.8078	105.1082	605	0.5246	68.2616	750	0.0141	1.8410
465	0.5367	69.8268	610	0.5062	65.8581	755	0.0116	1.5136
470	0.4374	56.9152	615	0.4848	63.0725	760	0.0099	1.2816
475	0.3362	43.7368	620	0.4602	59.8791	765	0.0081	1.0496
480	0.2481	32.2823	625	0.4318	56.1848	770	0.0073	0.9550
485	0.2266	29.4769	630	0.4030	52.4393	775	0.0052	0.6756
490	0.2344	30.4913	635	0.3711	48.2832	780	0.0046	0.6033
495	0.2549	33.1618	640	0.3387	44.0733	785	0.0043	0.5620
500	0.2944	38.2990	645	0.3057	39.7757	790	0.0048	0.6227
505	0.3417	44.4589	650	0.2761	35.9287	795	0.0030	0.3868
510	0.3830	49.8323	655	0.2468	32.1068	800	0.0019	0.2446
515	0.4153	54.0366	660	0.2180	28.3610			
520	0.4408	57.3463	665	0.1916	24.9353			

Condition: Tx:19.1'C, Ti:0.0'C, R.H.:60%  
Test Lab: FAROS LED Lab  
Operator: Lab

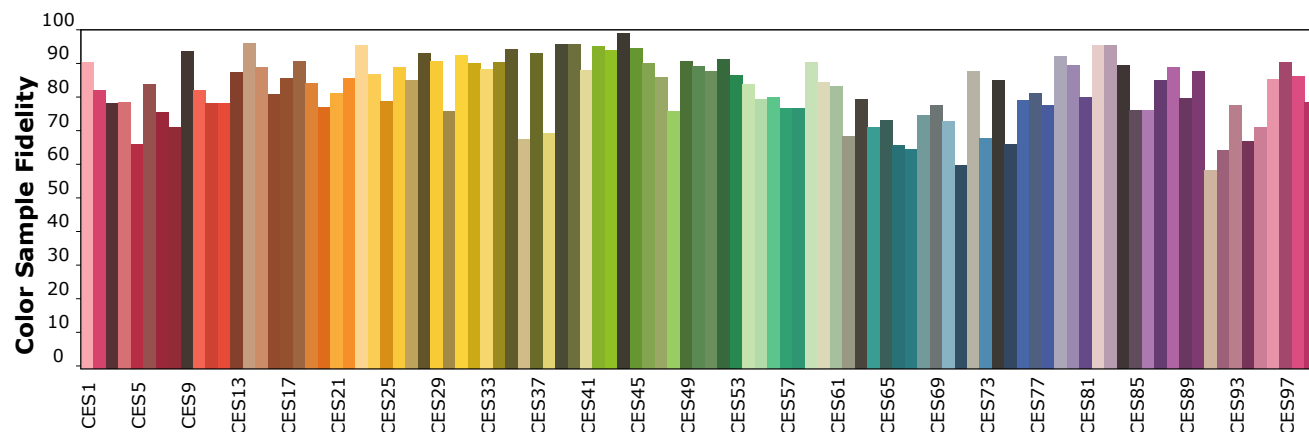
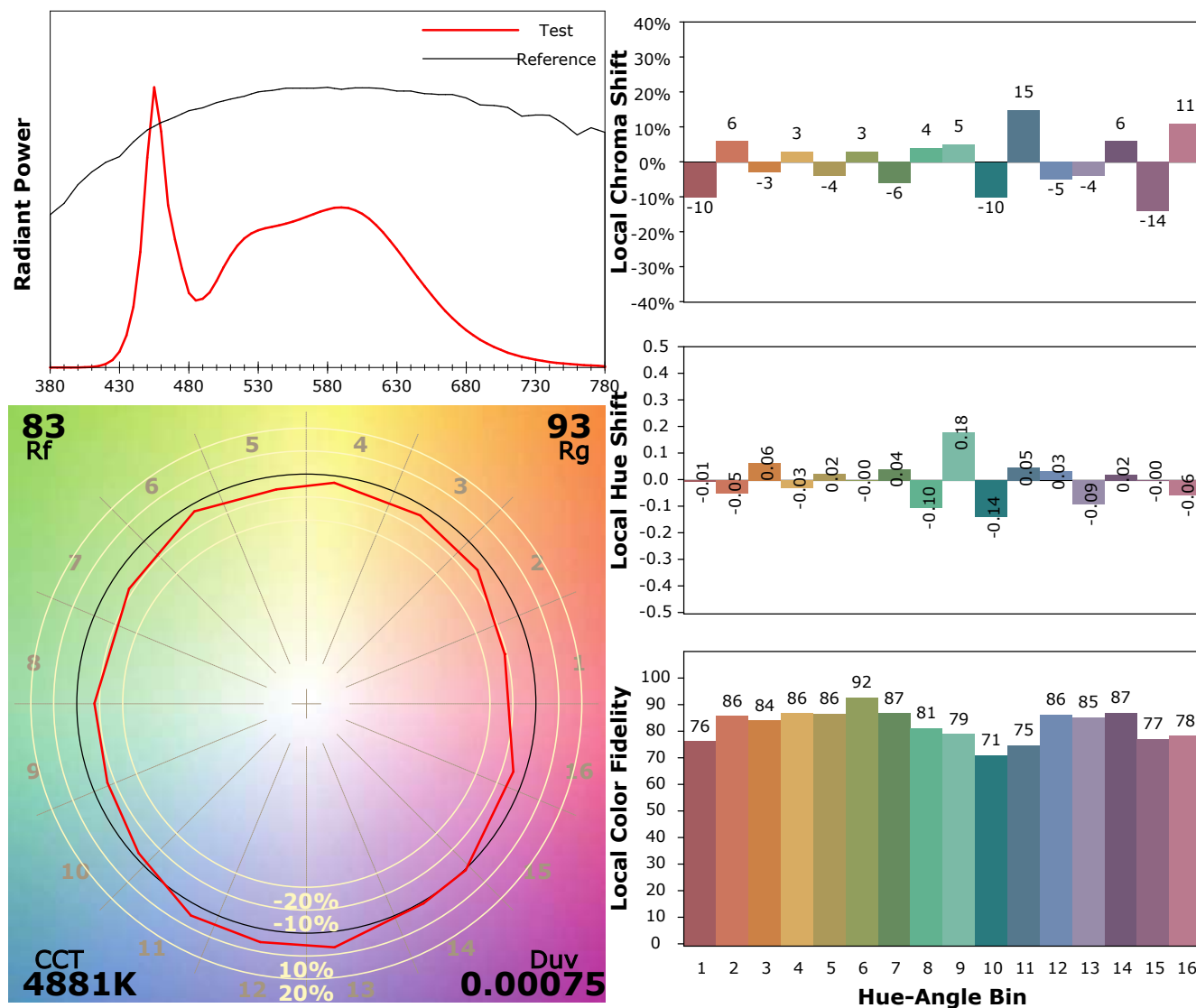
Test Device: Lisun LMS-9000A(Plus)  
Test Time: 2021-11-29 10:09:41  
Inspector:

## IES TM-30-18 Color Rendition Report

### Product Information

Product Type: FG 595 36W 5000K PRISM

Manufacturer: FAROS LED



Condition: Tx:19.1°C, Ti:0.0°C, R.H.:60%

Test Lab: FAROS LED Lab

Operator: Lab

Test Device: Lisun LMS-9000A(Plus)

Test Time: 2021-11-29 10:09:41

Inspector: